

NOOS Newsletter



President's Message

Prez Sez,

Unsung Heros

Members of the Board are not the only NOOS members doing good works.

Anna Maria pitches in wherever she is needed; helping Debbie with raffle, presenting topics and instruction for Newcomers.

Russel houses the not-so-small library.

Henrietta has graciously offered her home for speakers overnight or for NOOS functions.

Yvette seeks out new members and guests to introduce at our meetings.

Ann Roth houses our considerable raffle plant collection. She tends and grows the plants so we can win great additions to our collections. She also tallies the monthly judging winners and comments on each one. She can often be called upon to set up exhibits.

Patricia finds room to keep much of our hardscape - crates, poles etc. for our exhibits. She volunteers frequently to speak to garden clubs, sharing her passion for orchids and considerable knowledge.

Ed and Ethel, Marian and Ian are generous with their time and talents in setting up or taking down out of town exhibits.

Max puts our room together before every meeting and provides cake and coffee. He offers his home for any meeting and the Christmas banquet. He houses speakers, takes them around town and, and, and. It would take an entire newsletter to list all of the things Max does for NOOS.

And Vienna who puts a lot of hours and effort into our monthly newsletter. They look great and are full of information. She is looking for her replacement next year and we owe her the courtesy of finding that person to carry on. Big shoes to follow, but I know there is someone in our membership who could fill the position.

If you don't see your name here, make it your goal for next year to volunteer for a position on the Board or a Committee or for something you want to do for your club!

Molly



OFFICERS

PRESIDENT Molly Prokop

VICE-PRESIDENT Donna Stange

Secretary Larry Hennessey

Treasurer Alice Barrios

Newsletter Editor

Vienna Mackey

Website Editor

Debbie Dinwiddie

Board of Trustees

Margaret Bossier

Debbie Dinwiddie

Carol Molero

Past President

Carol Stauder

MEETING NOTICE

Tuesday, Aug. 16, 2011

City Park Garden Study Center

7:30pm

GUEST SPEAKER

"Vandaceous Intergenerics"

by Bob Fuchs

NEWCOMER'S PROGRAM

"Controlling Orchid Pests"

by Donna Stange



Minutes of the June 2011 Meeting

by Larry Hennessey

President Molly Prokop called the meeting to order on July 19, 2011. 6 guests were in attendance. Minutes were accepted as published.

VP Donna spoke about next month's speaker Bob Fuchs. Pre-orders must be prepaid and specified as for the New Orleans society. Cutoff date for pre-orders will be sent to membership via email.

Secretary Larry announced Carter and Holmes sent out a notice that they will provide societies with a \$50 gift certificate in exchange for an updated copy of the membership roster. No objections were raised. Also, they will provide a \$5 gift certificate for every order from the membership with 90 days of the announcement (dated June 3, 2011).

Molly informed the membership that Eddie Barrios was in the hospital. Our hope and prayers go to his speedy recovery.

Show wrap up meeting was held on June 17. Discussion included raising the price of the 1st table from \$100 to \$150 since there is a long waiting list for new vendors. The society needs to purchase additional tables and needs everyone to be on the alert for 6 ft tables on sale. Publicity for the show was excellent this year. Decision was made to not accept checks at the raffle table going forward.

Terrebonne show results will be posted in the newsletter. Member Jeff Raymond received an AOS award.

A board meeting was held on June 17. Discussion included not participating in the City Park show sale and replace with sales at members homes. Anna Maria and Christian will begin building a facebook page for the society. New home is needed for library or sell it. Russel will provide Alice an inventory to review. John Bourgeois has suggested having 3 societies (Baton Rouge, Terrebonne, NOOS) host a fall SWROGA show. Budget for speakers was discussed.

Upcoming shows include Houston Summer Workshop (Aug 5-6), Alamo Orchid Society/AOS fall show, Northeast Louisiana (Nov 4-6)

Several garden clubs have requested speakers. Anyone interested please contact Molly.

After a brief refreshment break (cake provided by Max), guest speaker Geri Powell of the Orchids Gallery in Tennessee presented a program on Growing Cooler Orchids in Warm Climates.

31 members were present at the meeting. Next meeting August 16.





Monthly Winners

Tuesday, July 19, 2011

Award	Member	Plant
BG-1	Carol & Arne Stauder	Pyp. Memoria Bill Carter 'John Robert stauder' HCC/AOS
BG-2	Ed Schellhaas	Ascda. Thai Joy 'Meechan'
BG-3	Ann Roth	Aslla. africana nilotica 'Waunakee' AM/AOS
BH-1	Ed Schellhaas	V. Velthius x V. Alawan
BH-2	Patricia Sander	Lc. Mary Ellen Carter 'Dixie Hummingbird' HCC/AOS
BH-3	Molly Prokop	V. Filipino
BH-3	Carol & Arne Stauder	Pyp. Memoria Bill Carter 'John Robert stauder' HCC/AOS
BS-1	Paul Young	Epi. difforme
BS-1	Paul Young	Den. wassellii 'Max Mipro' CCE/AOS
BS-1	Ann Roth	Aslla. africana nilotica 'Waunakee' AM/AOS
BS-1	Carol & Arne Stauder	Phal. cornu-cervi
BS-1	Ian Hiler	Hab. medusa



Mites on Cultivated Orchids



Part 2

Paul J. Johnson, Ph.D.
 Insect Research Collection
 Box 2207A, South Dakota State
 University
 Brookings, SD 57007



Bug Bites

Rubbing Alcohol

Light infestations restricted to one or a few plants can usually be treated with household products. When possible, immediately isolate infested plants from others to prevent the mites from moving amongst them. Probably the most popular home remedy is to spray plants with a mixture of isopropyl (rubbing) alcohol and liquid mild dish detergent, such as Ivory. Do not use other alcohols, such as ethanol or methanol, as these will penetrate the plant tissues and cause considerable damage! The concentration of the isopropyl seems to make little difference, the common 70% concentration available in stores is satisfactory. Alcohol treatment is effective against all the life stages of mites, except eggs.

A potential problem with alcohol treatment is the rapid evaporation of alcohol causing cooling of plant tissues. Especially with air movement that increases evaporative cooling, this chilling may over-cool tissues and create zones of dead cells that can become necrotic with bacterial or fungal infection. On warm days or in a breeze consider blotting residual alcohol with a tissue instead of permitting it to evaporate off the plant. Alcohol and detergent solutions can also damage delicate buds and blooms, so caution is urged for prized plants.

Repotting is not very effective against mites. However, with an extreme infestation it may be worth repotting a plant as eggs and resting adults may be in the growing media.

Horticultural oil, neem oil, mineral oil, and insecticidal soaps are readily available, inexpensive, and effective against mites. Oil solutions smother the mites so a complete coverage of all sprayed plants is essential. These oils are mixed with water and usually a plant-safe detergent or commercial spreader-sticker should be used for enhancing the effectiveness of the oil. The main caution with these oil solutions is that they should never be applied to plants on hot days (>85°F/29°C) or in direct sunlight, as to prevent burning of tissues. Leave the plant in shade until the application has dried. Some plants or parts, such as buds and blooms, are sensitive to oils so due care and consideration is urged.

Insecticidal soaps are usually solutions of a synthetic pyrethrin and potassium salts of fatty acids, otherwise known as soaps. Pyrethrins are synthetic analogs of pyrethrum, the natural extract from certain Asteraceae, particularly certain species of *Chrysanthemum*. Caution is urged with so-called "safe" insecticidal soaps as some plants are sensitive, particularly tender new tissues. Piperonyl butoxide is a common enhancer of pyrethrins but can cause allergies in some people and may affect plants, too. Some non-orchid ornamentals will drop leaves and abort flowers when sprayed with insecticidal soaps, so again caution is urged with prized orchids.

Because the life cycle of mites is so short and there are overlapping of generations, to bring a serious problem under control you may need to do treatments every 1-3 weeks. The time period between control efforts will depend upon the growing conditions, especially temperature: greater frequency in a warm greenhouse, less inside a house. As with any pest, persistence is a key to success and correlating the control method to the mite species is important for effective management. Cultural conditions are a key to managing mite populations.

Insecticides and Acaricides

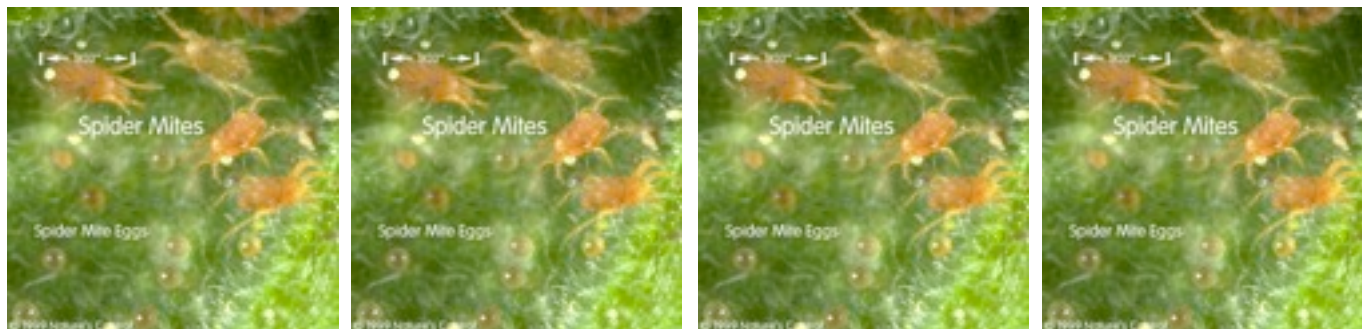
Persistent populations of mite or infestation in many plants usually demand the need for synthetic pesticides. Mites are unrelated to insects and most common insecticides are not effective against mites. Pesticides designed for mite control are called miticides or acaricides. There are few miticides specifically registered for use on orchids, but there are many miticides for ornamental plants in general and several are available as inexpensive home-and-garden solutions. Miticide formulations not labeled for ornamental plants are often mixed with solvents that aid in the application of the active ingredient for specific purposes. These solvents, not necessarily the miticide itself, often produce phytotoxicity and may seriously damage or kill plants. Thus, never use any chemical that is not specifically labeled for ornamental plants.

Common insecticides are not effective against mites, though some do have some weak suppressive action, but will kill mite predators. Acephate (Orthene), malathion, and disulfoton (Di-syston) are labeled for mites but are not very effective. Resistance by mites to pesticides is a serious problem and is in part due to the excessive use and weak action from common insecticides. Dimethoate, diazinon, and chlorpyrifos were recently removed from the market in the U.S. for non-commercial applications due to excessive and careless use causing some serious health and environmental problems.

There are many miticides available for ornamental plants, but some are not tested on orchids, and others are generally too expensive or otherwise not readily available for the small-collection grower. Effective miticides for ornamental use include avermectin (Avid), bifenthrin (Talstar), dinofenothol (Pentac), fenbutatin-oxide (Vendex), and fluvalinate (Mavrik). Fenbutatin-oxide is mixed with acephate and sold in home-and-garden formulations. Avermectin is probably the least toxic of these chemicals to people and pets.

Of course, always follow label directions and never exceed the minimum recommended concentration given in mixing directions! Recommended solutions are based on extensive testing for selected pests and plants. Orchids are sensitive to many chemicals, particularly under direct sunlight or high heat, and while certain species may not react to a given formulation others may, so your own testing on plants before general application is recommended.

Home orchid keepers that need to apply miticides during inclement weather need special care for applications. If you cannot spray out of doors, place your plant(s) inside a large plastic bag (remove the bag after the spray has settled!) and let the plant ventilate where the fumes will not be wafted around the house or work area.



Final Considerations

Heavy infestations of mites, especially on many plants may require extensive control methods. Since the damage done by mites is permanent, constant management of the population more effective than control of a major infestation. On the extreme side if you have a plant showing signs of severe change or general decline from mites you may have to seriously consider destroying that plant, as the likelihood of rejuvenating that plant may not justify the expense and effort of continued treatments. Too, destruction of a sick plant can be used to justify the purchase of a new and healthier plant!

If you are battling mites for long periods of time (e.g., >2 months) and have been using the same miticide then you likely developed a resistant population of mites. Remember the short generation times of mites. The best resolution to this is to change methods and chemicals frequently; that is do not use the same chemical mix more than 3-4 times sequentially. After isolating infested plants give them a thorough application of something different from what you have been using. Resistance is not a problem with alcohol, oils, and soaps as these suffocate or desiccate the mites.

Generally, never use a miticide not labeled for ornamental plants. Be thorough. Prophylactic use of miticides is tempting but does little good as it is a waste of chemical and money, and allows resistant mites to develop.

Orchid growers with an entomological penchant and desiring detailed information are referred to the excellent book *Mites of Greenhouses: identification, biology and control*, by Zhi-Qiang Zhang (2003), CABI Publishing, Oxon (UK) and Cambridge (USA), ISBN 0 85199 590 X.

Image Credits: False spider mite and spider mite images are from the North Carolina Cooperative Extension Service and USDA-ARS, respectively. Other images are those of the author.



Terrebonne 2011 show AOS awards

Psychopsis papilio x Orchidom Butterfly 'Lucky Lucy' AM/AOS 84 points
Jeff Raymond (displayed in Jefferson Orchid Society exhibit)

Caularthron bicornutum x Sophronitis coccinea 'Palace' HCC/AOS 79 points
Louisiana Orchid Connection

Phal tetraspis 'C1' Louisiana Orchid Connection

Encyclia Pinar Del Rio x selligera AM/AOS 81 points
James Jeansonne (Baton Rouge Society exhibit)

Cattleya Hybrida 'Lisa Matherne' AM/AOS 82 points
Ashley and Beverly Matherne (Terrebonne Orchid Society)



Terrebonne 2011 Results

	Exhibitor	Hybrid or species	Class	Ribbon
	NOOS	Exhibit	929	25 sq ft Society Trophy
	Marian Prigmore	Paph Deperle	206	Blue Pulled AOS
	Alice & Eddie Barrios	Gram scriptum v. citrinum "Hihimanu" AM/AOS	702	Blue
	Carol Stauder	Phal cornu-cervi 'Knobb's Creek'	325	Yellow
	Carol Stauder	Pyp Memoria Bill Carter 'John Robert Stauder' HCC/AOS	420	Yellow
	Margaret Bossier	Paph Pinocchio	206	Red
	Molly Prokop	Ascof Twinkle	320	Best Grown Vanda Trophy
	Patricia Sander	Dtps Fusheng Purple Velvet-Mount x Yu Pin Polar Star	333	Blue
	Patricia Sander	Ctna Maui Maid	125	Red
	Larry Hennessey	Bulbophyllum Betty Kelepecz	712	Yellow Pulled AOS
	Larry Hennessey	Phal Tying Shin Cupid	327	Red
	Larry Hennessey	Phal Penang Moonbright	326	Yellow
	Larry Hennessey	Pleurothallis tribuloides	711	Red
	Larry Hennessey	Bletilla ochracea	715	Yellow